

# Logistics 4.0 for today and tomorrow

Canned foods producer Sabarot Wassner has centralized its logistics operations with an AS/RS for pallets supervised by Easy WMS warehouse management software.

Country: **France** | Sector: **food & beverage**



## CHALLENGES

- **Automatically connect** the AS/RS with the production line output point for finished goods.
- **Control stock traceability** in real time.
- **Optimise space** to increase frozen storage capacity.

## SOLUTIONS

- **AS/RS** for pallets.
- Easy WMS warehouse **management software** from Mecalux.
- Movirack **mobile racking**.
- Pallet racks.

## BENEFITS

- **Automated storage** of 22,000 tons of finished product annually.
- **Daily dispatch of 200 pallets** sent to end customers.
- **Full traceability** of 6,376 pallets.
- **Centralization** of all logistics activity in a cutting-edge centre.



With over 200 years of experience, family-run business Sabarot offers a wide variety of legumes, cereals, and seeds, including Le Puy green lentils and spelt from Velay. It also specializes in mushrooms and escargot. Sabarot selects the best varieties by promoting its associated producers through channels that guarantee the origin and quality of each harvest.

- » **Founded in: 1819**
- » **International presence: 70+ countries**
- » **Production capacity: 33,000 tons/year**

French company Sabarot, a producer and distributor of cereals and legumes — i.e., its popular Le Puy green lentils and spelt from Velay — has seen steady annual growth of about 15% over the past 15 years. On a logistics level, this business growth led the company to centralize all its logistics operations, particularly, the storage of the entire production volume.

Sabarot CEO Antoine Wassner says: “Like all companies, we were affected by the coronavirus pandemic. Global economic activity was halted for a time, despite the fact that the food sector has always been essential. The pandemic made us see that both our pro-

duction and logistics chains had to be more competitive to respond quickly to customer demand.”

Determined to put an end to the cost overruns involved in outsourcing its warehousing needs, Sabarot has centralized all logistics operations in its historic center in Chaspuzac (France). There, it produces, stores, and distributes its goods to customers in over 70 countries. Its main markets are France and the UK, although it also exports its products to countries such as Malaysia, the United Arab Emirates, and Singapore.

“We turned to Mecalux once again because we needed to automate to improve our operations. We’d worked with Mecalux before, so we had no doubts when it came to our choice. In fact, we’ve been working together for over 20 years, installing different storage systems. We began by putting in pallet racks and then Movirack mobile racks.”

The most recent project carried out by Sabarot and Mecalux constitutes the construction of an automated storage and retrieval system (AS/RS) managed by the Easy WMS warehouse management system and designed to accommodate finished goods from the production lines. “We’re thrilled with the assembly and start-up of our new logistics automation project because Mecalux implemented it extremely quickly,” says Wassner.

### **State-of-the-art warehouse**

The new AS/RS, with capacity for 6,376 pallets on 70.5-foot-tall racks, stands out for the length of its two aisles: 302'. A stacker crane operates in each aisle. Following instructions from Easy WMS, these machines are charged with storing, removing, and transporting pallets autonomously. Another particular characteristic of this AS/RS is that, at the

request of Sabarot, it is prepared to operate at a frozen temperature (23 °F) as well as at ambient temperature.

The racks installed are double-deep, i.e., they can store two-pallets deep on each level, thus doubling capacity. To access the second pallet, the stacker cranes are equipped with telescopic forks to be able to handle two pallets at a time. Easy WMS is configured so that both positions store pallets of the same SKU, avoiding unnecessary movements. Likewise, the racking locations have been personalized to accommodate pallets of two different sizes and with loads of three possible heights.

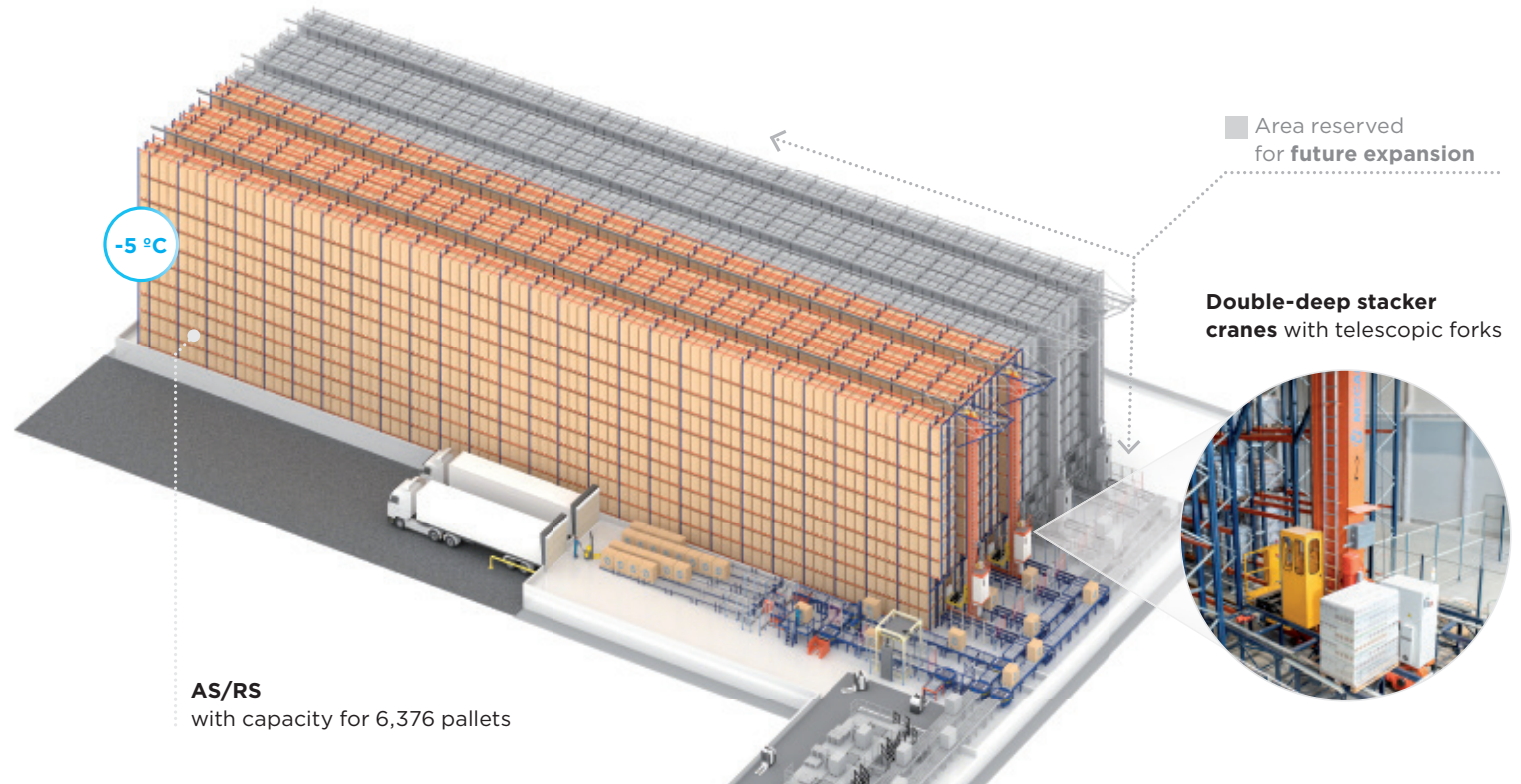
In front of the racks, automatic pallet conveyors have been set up to connect the AS/RS with the loading docks and the receiving stations where the goods arrive from production by means of AGVs.

“Not only have we automated the storage process with the stacker cranes, but we’ve also integrated automation in the dispatch of pallets to the loading docks,” says Wassner.

In the docking area, Mecalux set up four preload flow channels, each with capacity for 17 pallets. The total capacity of these channels (68 pallets) is equivalent to that of two freight trucks.

### Subzero storage

The Sabarot center also has a freezer warehouse operating at -4 °F and equipped



-5 °C

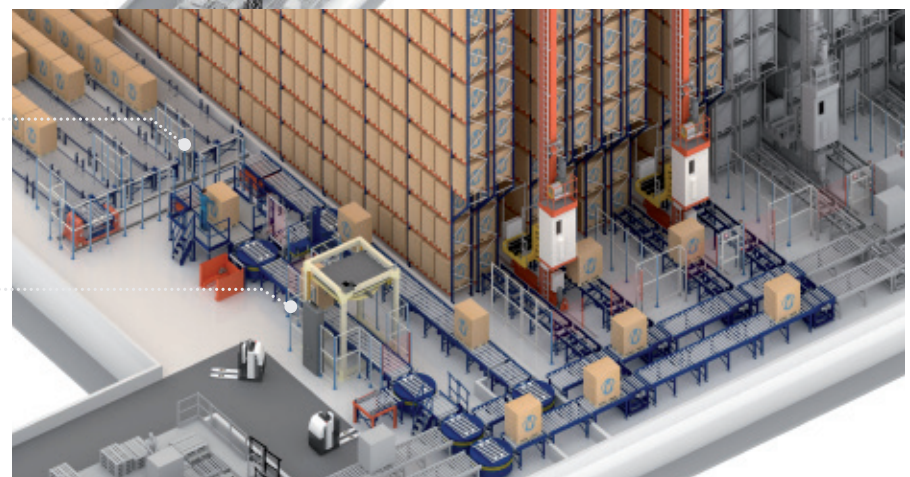
Area reserved for future expansion

Double-deep stacker cranes with telescopic forks

**AS/RS**  
with capacity for 6,376 pallets

**Four live preload channels,**  
each with capacity for 17 pallets

**Automatic conveyors**  
that connect the AS/RS with the docking area and receiving stations



with Movirack mobile racking. The racks are installed on mobile bases that move sideways autonomously. To open the required aisle and remove or deposit the goods in their locations, the operator merely has to give the command by means of the radio control device.

“The mobile racks have enabled us to significantly optimize our storage space compared to selective pallet racking. The Movirack system is ideal for cold storage, where energy savings and, hence, costs savings, are a key issue,” says Wassner.

Movirack mobile racking is the only compact storage system that offers direct access to all the pallets stored. With capacity for 1,816 pallets, the Movirack racking leverages all the available surface area to optimize the storage of finished products prior to their shipment to customers.

#### Easy WMS: warehouse management

“Easy WMS from Mecalux is one of the cornerstones of our logistics operations. We could say it’s like the conductor of an orchestra. It’s responsible for integrating any new product into the flow of goods,” says Wassner.

Sabarot needs to control all its items in real time to minimize mistakes and ensure complete traceability of its 7,800 SKUs. To connect the AS/RS with the other processes in the production plant, Easy WMS is integrated with the software that manages the AGVs and also with Sabarot’s ERP system.

“The permanent connection between the AS/RS and the production lines — both

physically via the AGVs and digitally with Easy WMS — allows us to ensure full traceability of all our products. All processes are strictly parameterized to ensure maximum logistics efficiency,” says Wassner.

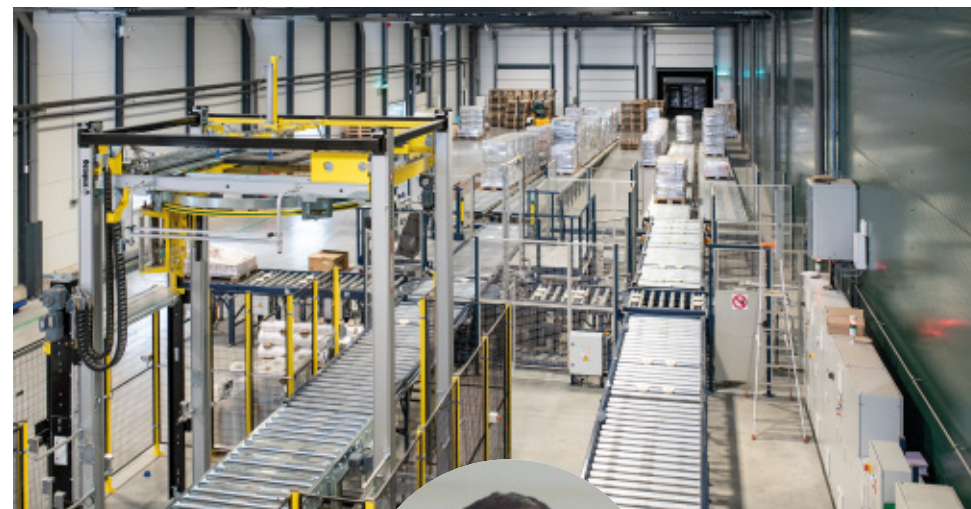
To introduce raw materials into the AS/RS, the AGV deposits pallets on the conveyors, where they have to pass through a checkpoint to verify that their size and weight correspond to the requirements established for their entry in the AS/RS. This process also serves for Easy WMS to identify the items that have arrived so that it can apply rules and algorithms to assign them locations in line with their characteristics.

“In terms of pallet outflows, Easy WMS has helped us to dispatch our products more quickly. The software optimizes the preparation of all documentation so that customers receive the correct products in the quantities ordered,” says Wassner.

#### Future-ready warehouse

The new AS/RS not only matches Sabarot’s current logistics needs, but is also prepared to support business growth. During the design phase and throughout assembly, Mecalux and Sabarot took into account a two-phase future expansion that could triple both the current throughput and storage capacity, accommodating up to 20,000 pallets.

The safety and effectiveness enabled by technology are fundamental for Sabarot’s day-to-day activities. With this new AS/RS and the modernization of the entire Chaspuzac plant, the company can continue to provide its customers around the world with healthy, natural, and quality products.



*“Automation and, in particular, the Easy WMS software, have helped us to improve our storage organization. As a food business, it’s vital for all our products to be strategically located. With Easy WMS connected to all the automated elements in our center, we’ve saved time and are more efficient in our goal to satisfy our end customers.”*

**Antoine Wassner**  
CEO, Sabarot Wassner