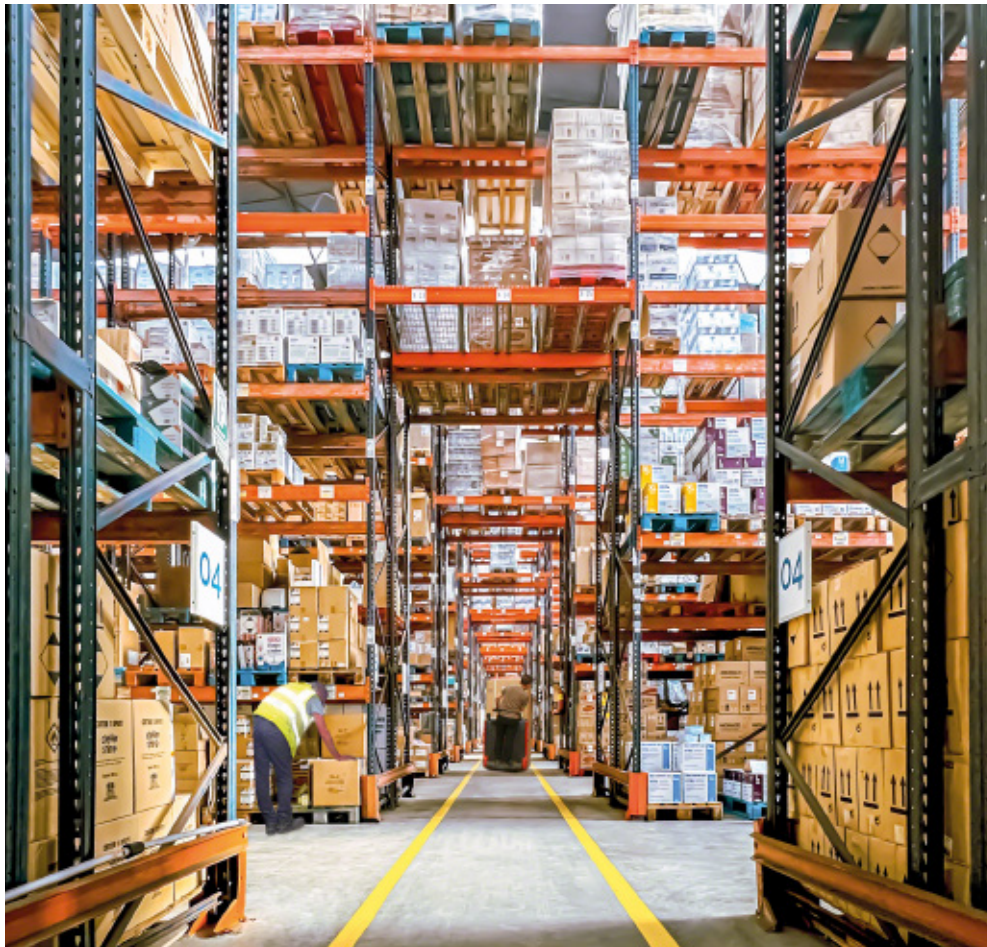


# Logistics digitization: 80,000 orders a year

Pedrosa has installed Easy WMS software to control 2,800 SKUs in real time and fill up to 600 orders a day.

Country: **Spain** | Sector: **chemicals & cosmetics**



Pedrosa is a distributor of industrial hygiene products and supplies such as professional cleaning materials and chemicals for swimming pool maintenance. From its logistics centers in Mallorca, Ibiza, and Menorca, the company distributes products to its customers. These include hotel chains, restaurants, bars, catering businesses, gyms, schools, universities, and government agencies, among others.

- » **Founded in: 1972**
- » **Total storage space: 1.5 acres**
- » **No. of employees: 70+**

Pedrosa has modernized its supply chain to boost its rate of expansion. “Our company has grown exponentially over the past few years, and this compelled us to gain greater control of our logistics operations,” says Tony Cursach, CEO of Pedrosa.

In recent years, the hygiene and cleaning products sector has undergone a remarkable transformation. “Before, there wasn’t



## CHALLENGES

- **Adapt warehouse operations** to peak periods.
- Cope with **business expansion** and **demand growth**.

## SOLUTION

- Mecalux’s **Easy WMS warehouse management software**.

## BENEFITS

- Fulfilment of **80,000 orders a year** and **up to 600 a day** in high season.
- **Real-time control of more than 2,800** extremely varied SKUs.



such a variety of products compared to now, and with few SKUs, we were able to cover all our customers' needs. Today, the sector is highly professionalized: there's a product for every specific demand," says Cursach.

With a larger number of solutions, the business can accurately fulfill all customer requirements and provide better service. The logistics challenge this presents, however, is quite complex: how do you efficiently manage growing numbers of SKUs and orders? The key lies in digitization. By employing technology solutions such as a warehouse management system (WMS), companies can rigorously control their inventory and fine-tune their processes.

"At our facility in Palma de Mallorca, we prepare and dispatch about 80,000 orders a year. With such a large number of goods in constant movement, we needed tighter control over our stock to avoid errors and mismatches. We decided to install ware-

house management software that would help us provide our customers with better service. After weighing several options, we chose Easy WMS, the program from Mecalux, because we knew it would optimize our logistics operations," says Cursach.

### **Commitment to digitization**

For years, Pedrosa used its own computer system to organize its logistics processes. "But we had a lot of information gaps," says Cursach. As the number of SKUs rose (reaching up to 2,800 with distinct characteristics, storage requirements, and demand levels), the company realized that change was inevitable.

For Pedrosa to go a step further — i.e., to increase its efficiency in storage tasks, ramp up its warehouse productivity, and control its inventory — it had to implement a more sophisticated logistics software program. "We came to the conclusion that we needed to digitize our supply chain to improve our

operators' performance. Installing WMS software in our facility was the pinnacle of our transformation," says Cursach.

Digitizing its processes with a flexible, scalable software program such as Easy WMS has allowed Pedrosa to adapt to business changes, e.g., increases in demand and in the number of SKUs.

"We're happy with Easy WMS because we can supervise all movements of goods in the warehouse. Plus, we know the status of our inventory in real time. Since the software orchestrates all operations, we now have a meticulous record of all tasks carried out. Ultimately, we have much more effective control over our logistics processes," says Cursach.

Easy WMS is integrated with Pedrosa's ERP system, so the two programs communicate with each other continuously and bidirectionally. They transfer data and information that are essential for getting the most out of all the logistics operations performed in the facility. For example, Easy WMS notifies the ERP system of replenishments so that it can organize purchases from suppliers.

### **Advanced warehouse management**

Easy WMS intervenes in all processes in the facility, from location management to order picking and dispatch. The program distributes the work among the operators, showing them which items to collect for each order and the exact location of these products on the racks.

Pedrosa's business is seasonal. During peak season (April to October), the workload increases considerably due to higher demand from customers, particularly hotel chains. To ship all orders without errors or delays, proper organization of warehouse operations with Easy WMS is vital.



*"We're happy with Easy WMS because we can supervise all warehouse movements. Plus, we know the status of our inventory in real time. Since the software orchestrates all operations, we now have a meticulous record of all tasks carried out. Ultimately, we have much more effective control over all our logistics processes."*

**Tony Cursach**  
CEO, Pedrosa

These are the main operations carried out through Easy WMS:

**Goods receipt.** During the high season, the number of pallets received rises tenfold, up to 150 a day. Pallets arrive at the facility from suppliers in Spain and other European countries. The operators read the barcodes on the pallets with their RF scanners. The WMS identifies them, enters them in the database, and assigns them a location.

**Storage.** Easy WMS incorporates rules and algorithms to distribute Pedrosa's 2,800 SKUs strategically, taking into account the available warehouse slots and orders to be processed. The software then assigns operators storage tasks, showing them which items to pick and which position to deposit them in.

**Inventory management.** In addition to controlling stock continuously (the stored goods are updated in the system in real time), Easy WMS organizes the physical inventory. To do this, operators count the stock in the facility item by item to know which products are available. The program sends operators instructions on which goods to locate and count. With this process, the company verifies and guarantees that the products are in ideal condition.

**Order picking.** Every day, Pedrosa fills 500 to 600 orders. As directed by Easy WMS, operators walk up and down the aisles, removing from the racks the items required to put together the orders. The software calculates the optimal travel distances, making operators more efficient.

**Dispatch.** Pedrosa can distribute up to 150 pallets a day during its busy season. These are sent mainly to customers in the Balearic Islands. In the preload area, pallets are grouped by order or route, streamlining the distribution of loads onto the trucks.

Besides organizing warehouse operations, Easy WMS facilitates and optimizes operator tasks. "The program is very intuitive and user-friendly. New workers joining the company don't necessarily have to be familiar with the products — all they need to do is follow the commands from Easy WMS," says Cursach.

### The road to innovation

Digitization and automation are in Pedrosa's DNA. With the help of technology, Pedrosa can take on market changes, e.g., rising demand during peak season.

"We're still exploring the infinite possibilities of Easy WMS. We hope to apply all its functionalities to work more efficiently every day. In the first year since we installed it, we've minimized stock imbalances in the facility," says Cursach.

For an organization with a high business volume like Pedrosa's, warehouse management software is an invaluable tool: it is instrumental in streamlining supply chain operations. Thanks to Pedrosa's advanced, innovative logistics processes, the company aims to continue meeting its customers' needs effectively and to expand its market.

### Easy WMS adapts to market changes, such as increased peak season demand

